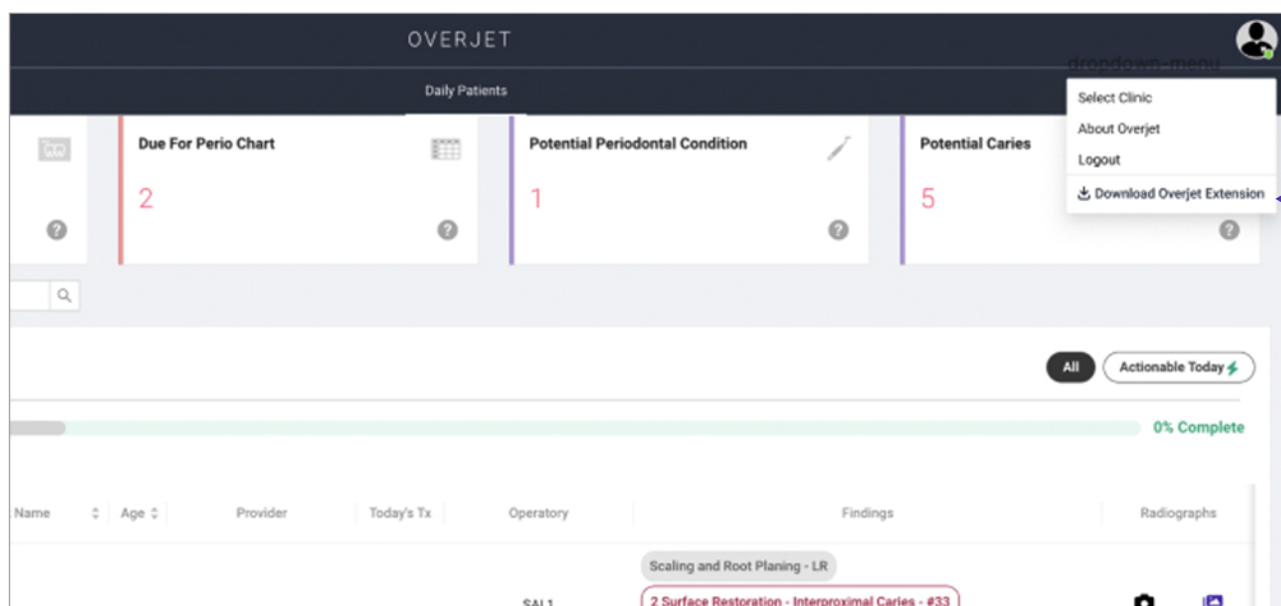


Instructions to Download Overjet-Eaglesoft Bridge Extension for One-Click Radiograph Access

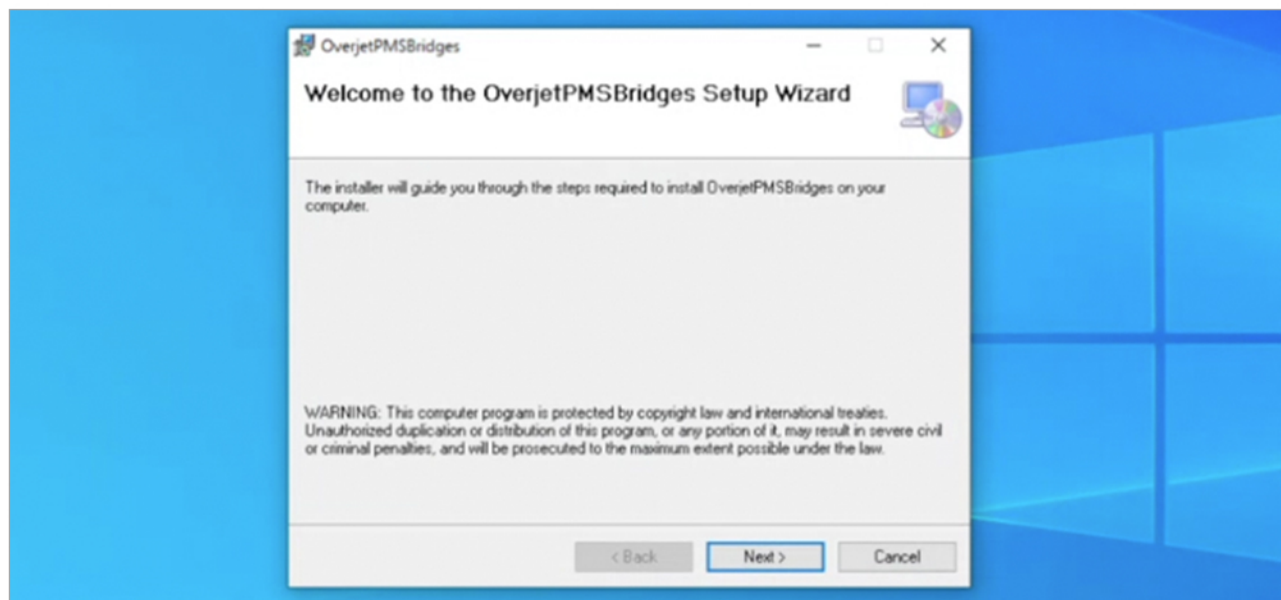
Save time by eliminating the need to search for patients on the daily patients page. Instead, access patient radiographs directly from your Practice Management System once you have installed the Overjet extension on your workstation.

The download typically takes less than five minutes to complete. It needs to be installed for each Windows login on a workstation. To see if it's been downloaded and installed by a colleague already, click the Desktop tray in the bottom right corner of your Windows screen and see if there is an Overjet Bridge icon. If it's not there, proceed with the instructions below.

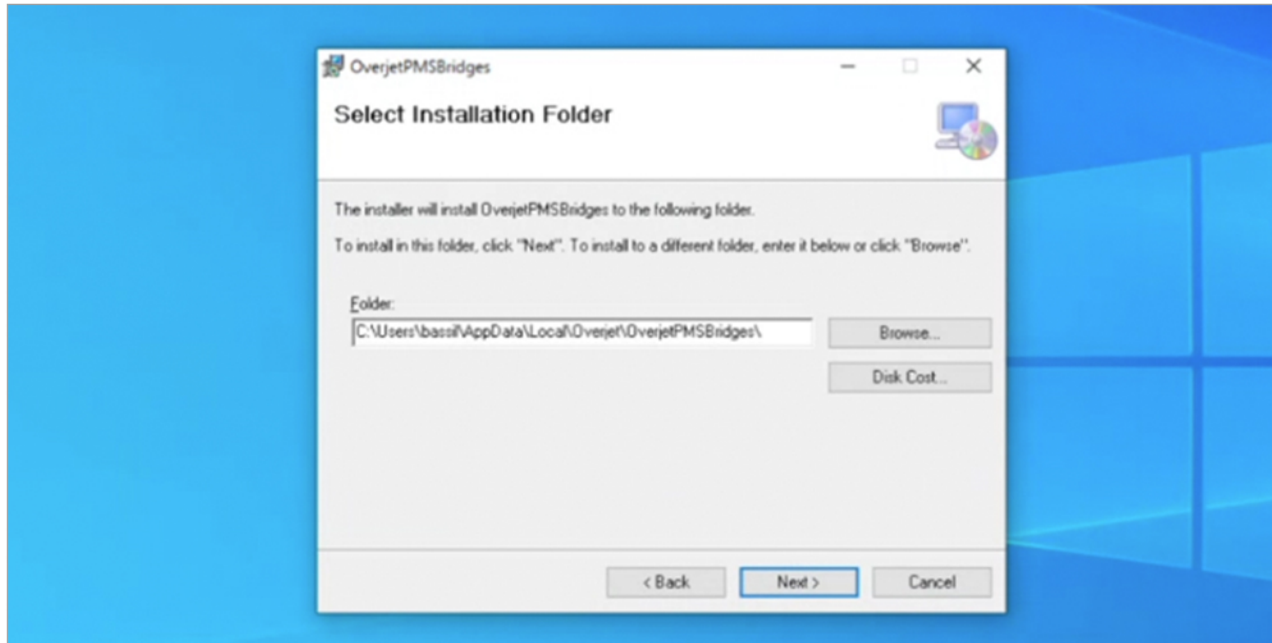
1 Log into Overjet on your workstation and select Download Overjet Extension



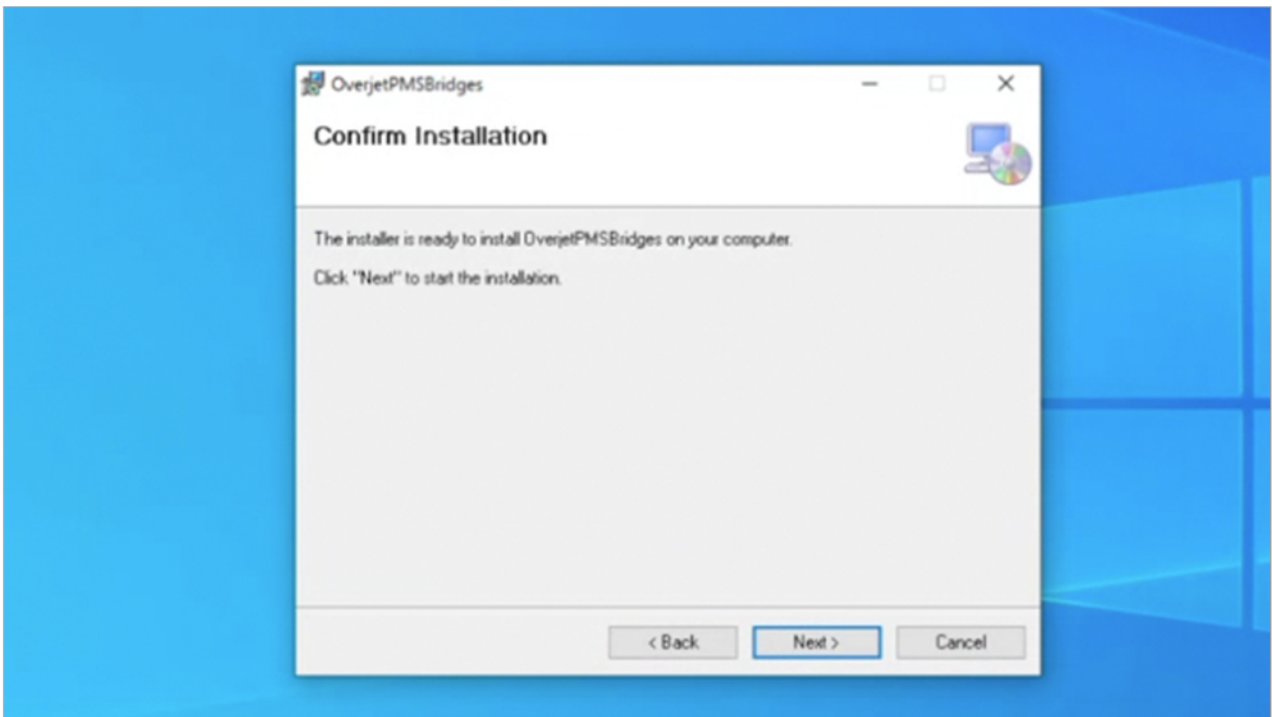
2 Run PMSBridgesSetup.msi Installer



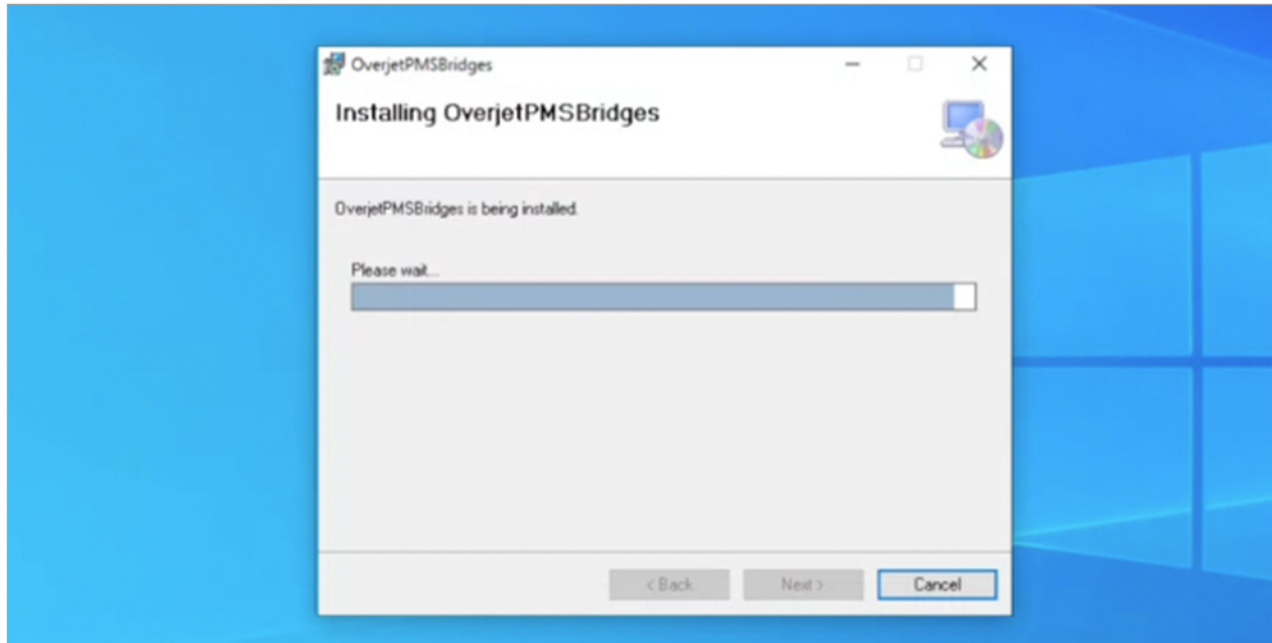
- 3 The workstation will assign a file path automatically. Just click next.



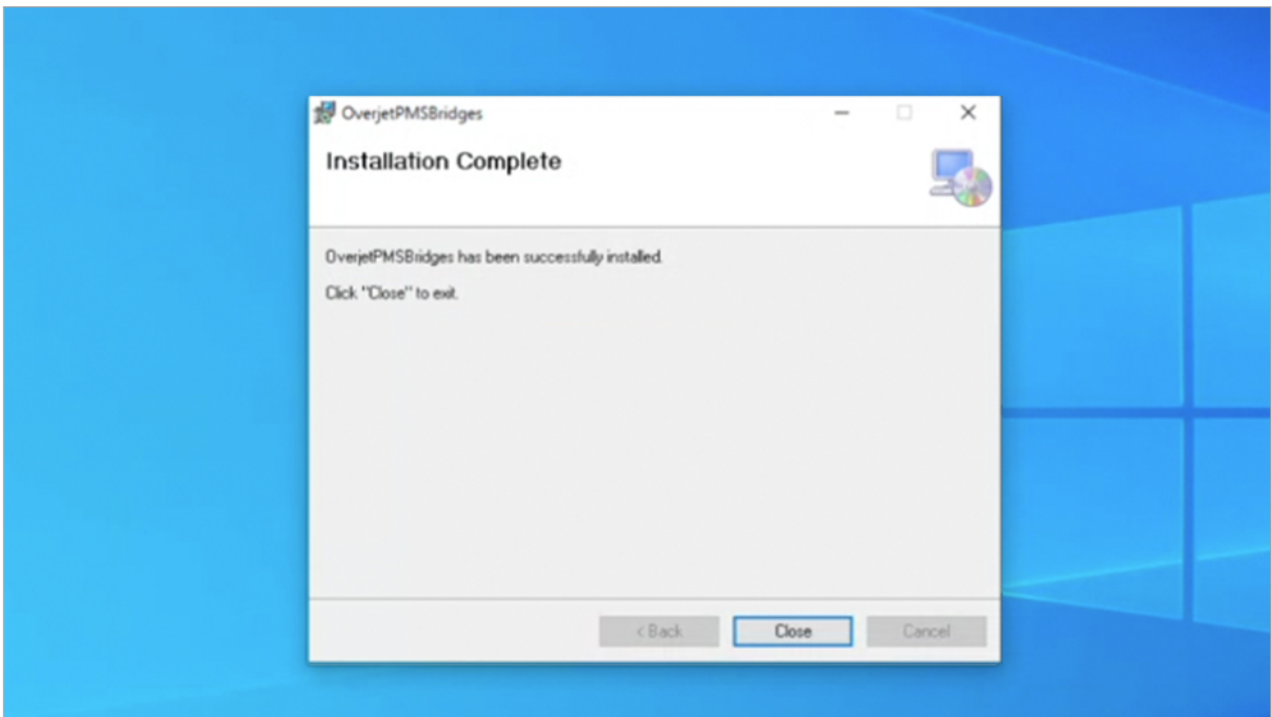
- 4 On the Confirm Installation prompt, click Next



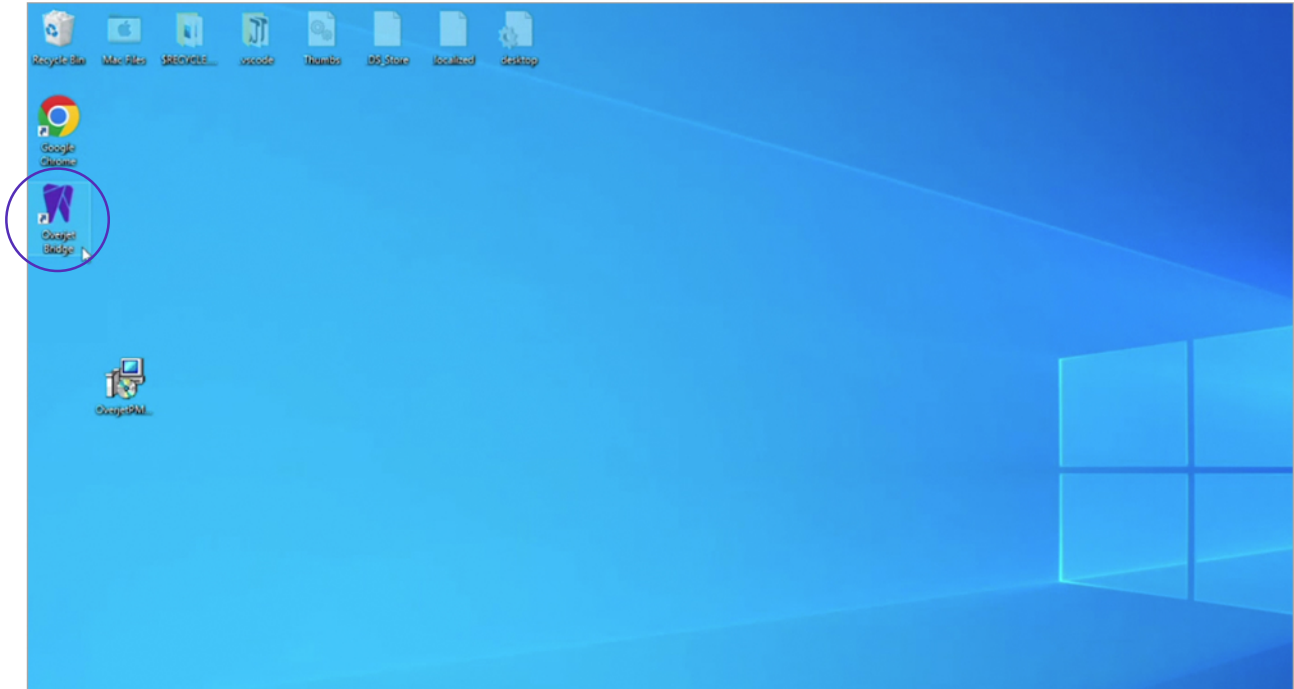
- 5 Please wait for the installation to complete, typically about 2 minutes



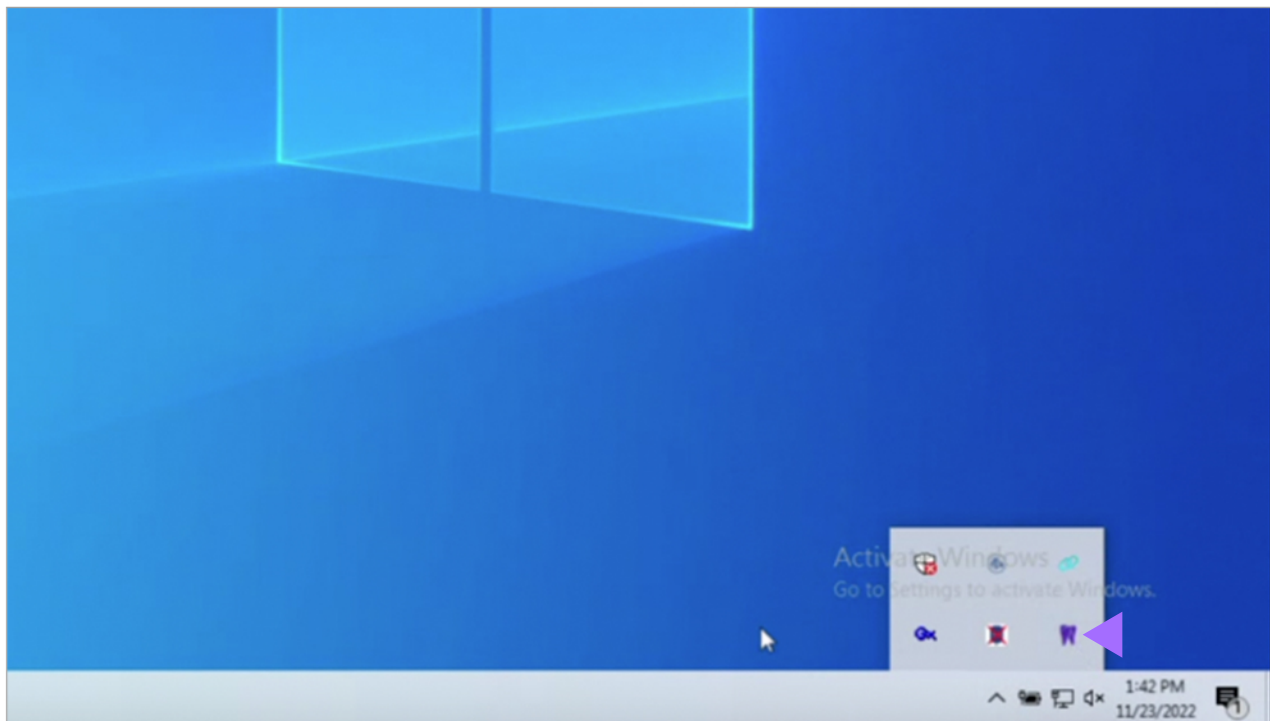
- 6 Close the application



- 7 Open the Overjet Bridge application by double-clicking the Overjet Bridge icon



- 8 The application will open in the Desktop tray



To access patient images from Eaglesoft with one click

1. From the chart module, select a patient
2. Double click the Overbridge Bridge icon from the Desktop tray